

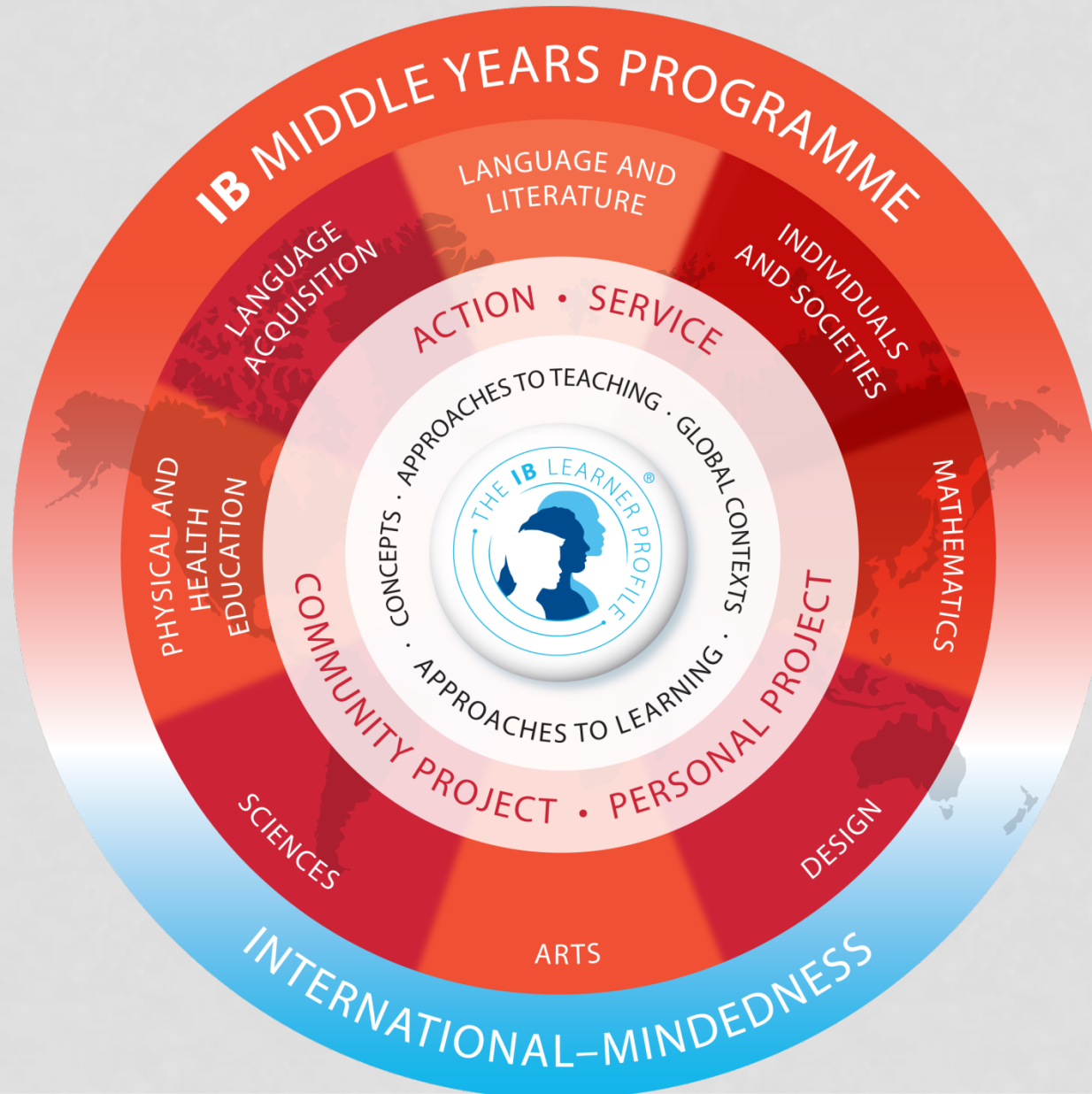
IT TAKES A VILLAGE TO GROW A GARDEN

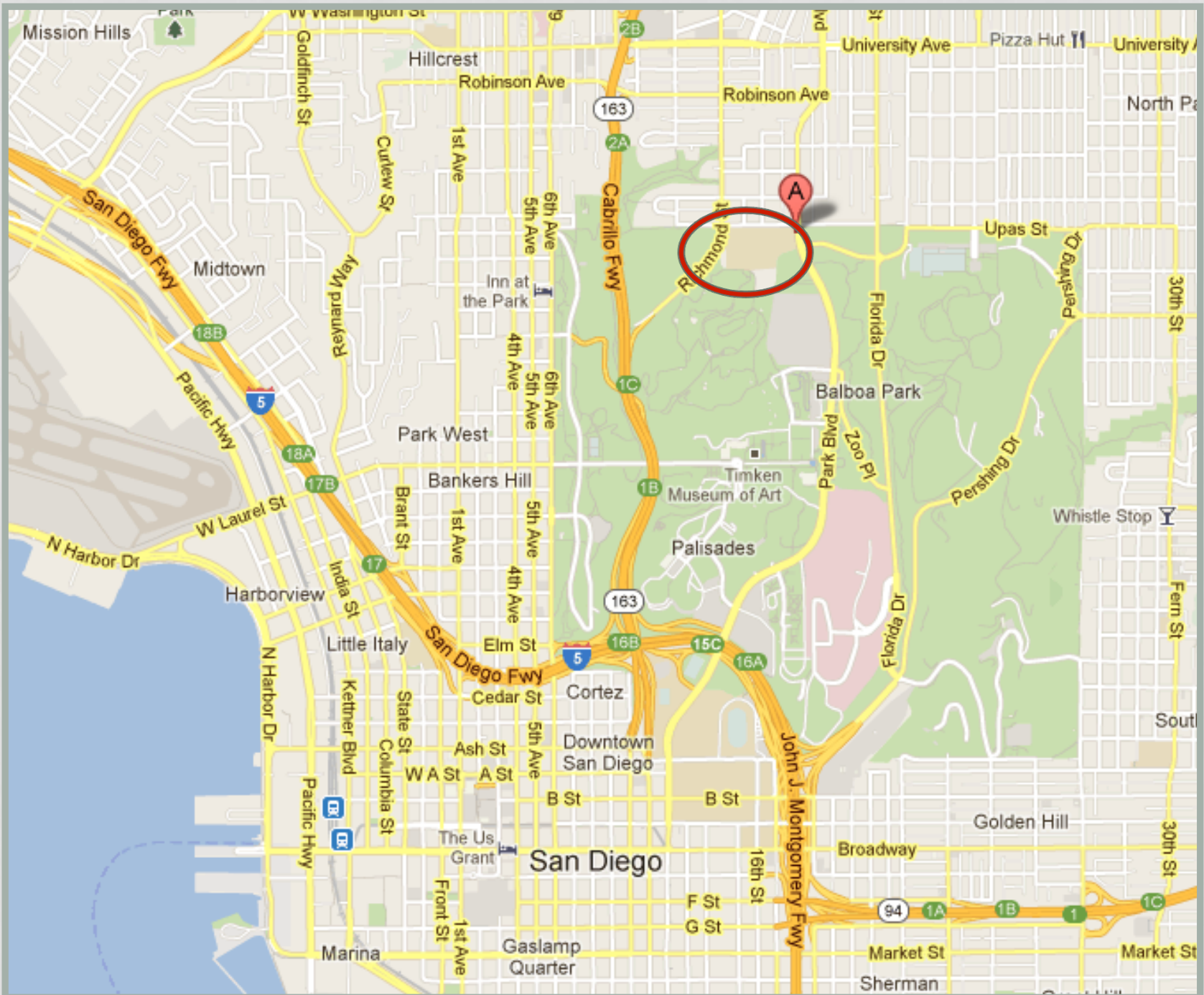


ROOSEVELT MIDDLE SCHOOL
International Baccalaureate® Magnet
San Diego, CA

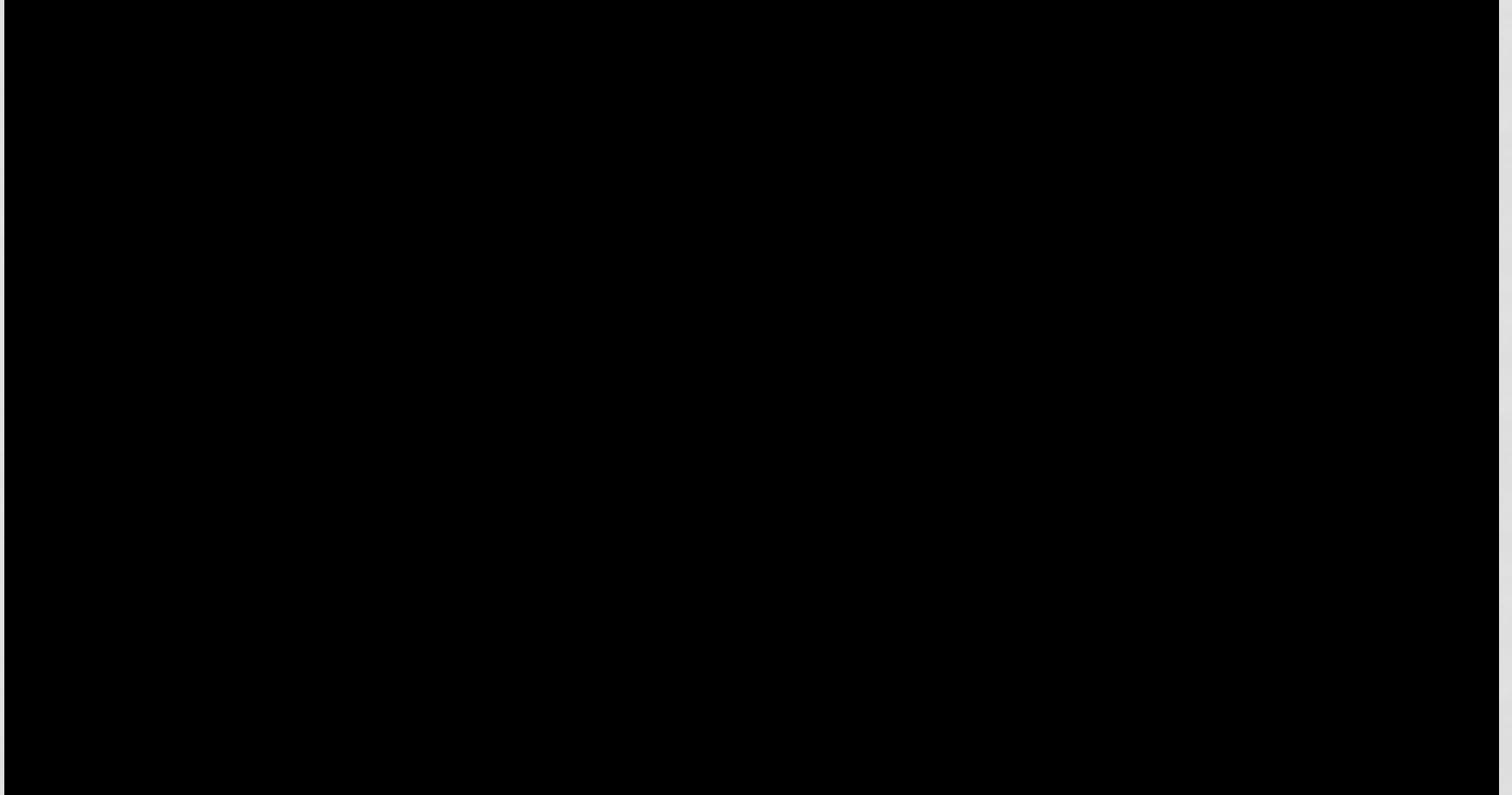
Sarah Trueblood, Francisco Garcia, Jose Valdez

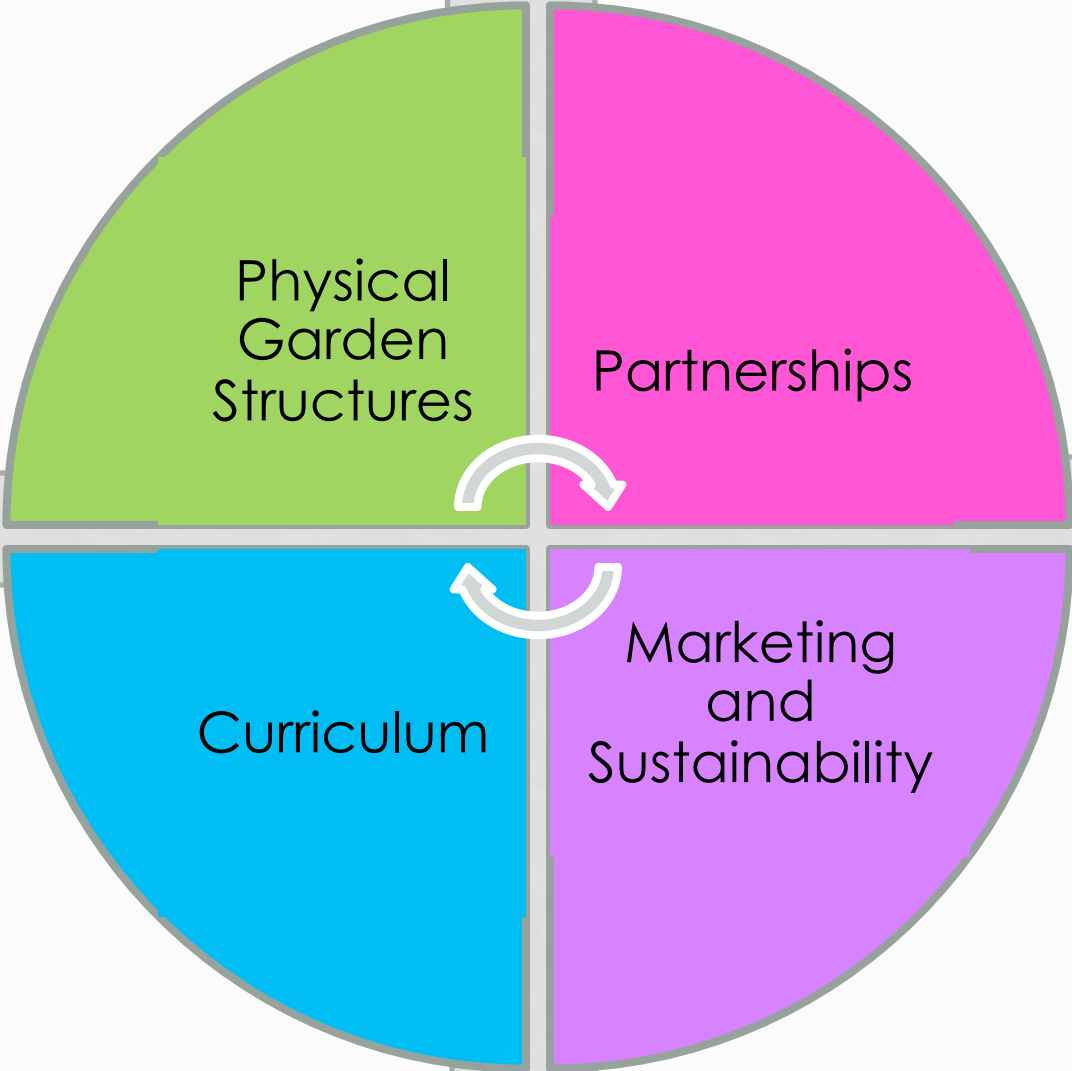
WHO WE ARE?





RMS GARDEN VIDEO PRODUCED
BY THE TRE•O•BYTES CLUB





Physical
Garden
Structures

Partnerships

Marketing
and
Sustainability

Curriculum

PHYSICAL GARDEN STRUCTURES



HOW DID WE GET STARTED?

- Garden Roots Club began on the joint use property shared with the San Diego Zoo
- Zoo brought forth ideas to reclaim the space for functionality
 - Partnership with ECOLIFE foundation/Aquaponics
- Saw an immediate connection to enhance work with students around International Mindedness
- IB Interdisciplinary Units

ECOLIFE

- It's estimated that still nearly 870 million people, or one in eight people in the world, suffer from hunger and malnutrition. In order to meet the growing global market and reduce hunger, the footprint of agriculture has expanded rapidly throughout the world. This expansion of agriculture has led to widespread deforestation. Unfortunately, with deforestation comes habitat loss, causing extremely high rates of species extinctions and climate change, while still showing little progress in hunger reduction. By developing sustainable agriculture techniques, we can address hunger effectively and lessen our environmental impact.



OER COMMONS SUN CURVE CHALLENGE



- ISKME is an independent, education non-profit established in 2002, whose mission is to improve the practice of continuous learning, collaboration, and change in the education sector. Based in Silicon Valley's Half Moon Bay, California, ISKME supports innovative teaching and learning practices throughout the globe, and is well-known for its pioneering open education initiatives.

ECOLIFE

- Aquaponics
 - Process of growing fish and vegetables in a closed system



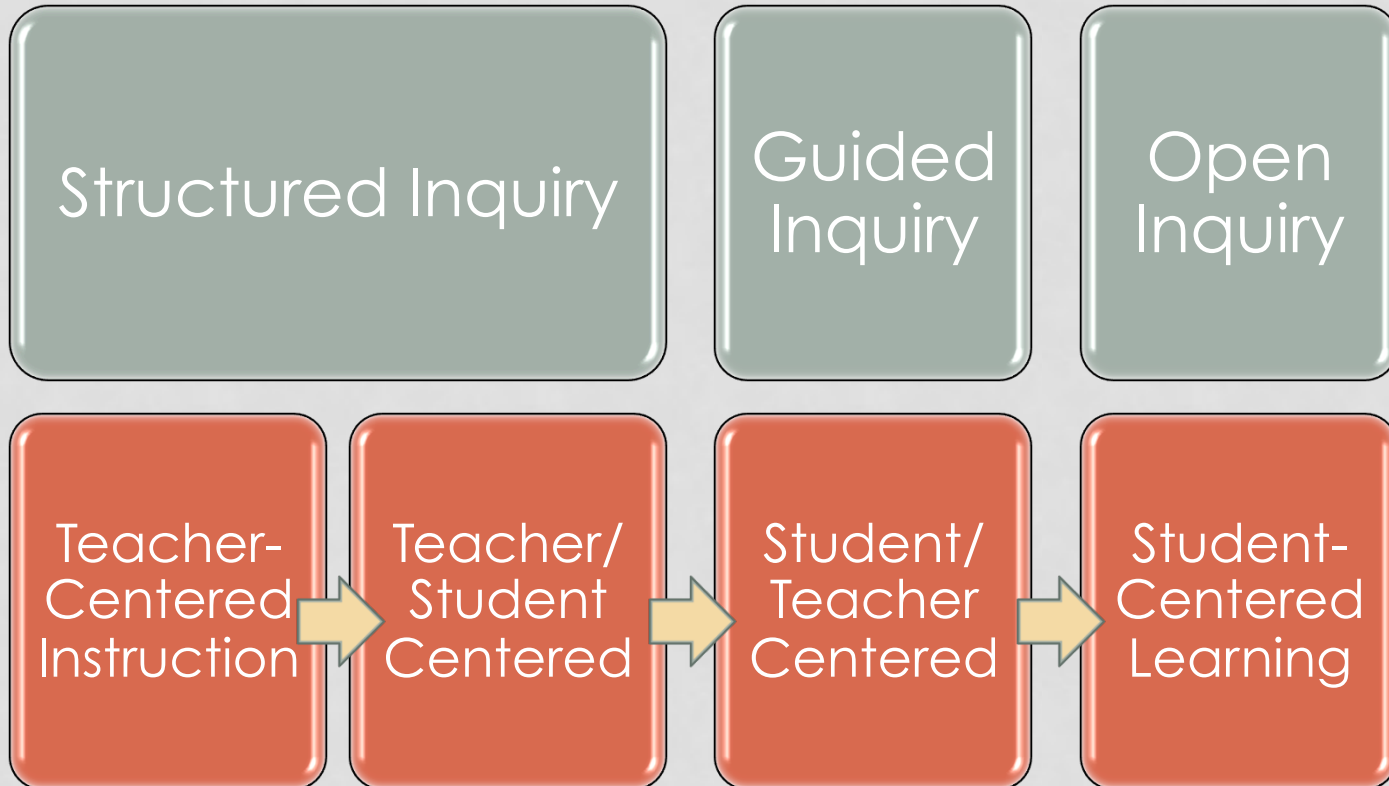
GETTING STARTED

- Initial Funding
 - MSAP Grant
- District Compliance
 - Safety and ADA Compliance
 - Red Tape
- Construction and Labor
 - Urban Corp Charter School

CREATING OPPORTUNITIES FOR INQUIRY

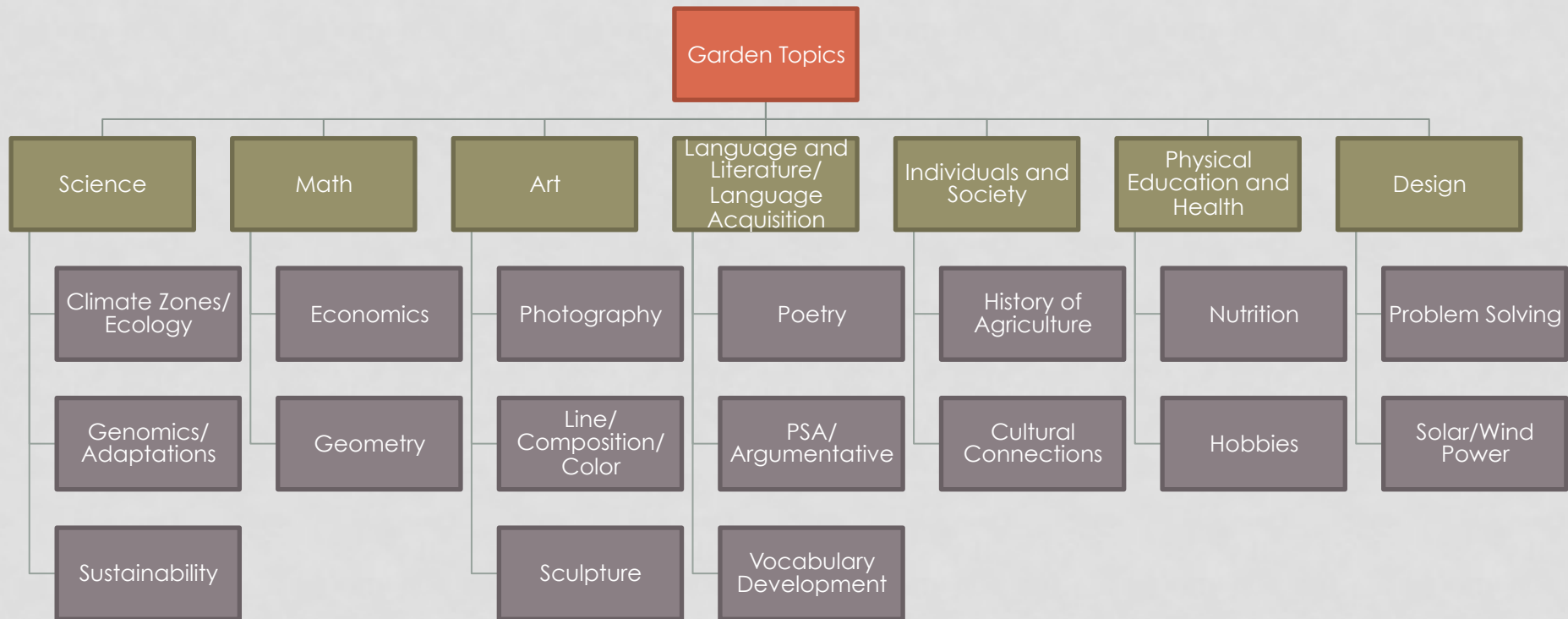
- What are the benefits of inquiry?
 - Rigor/Critical Thinking
 - Process over product
 - International Mindedness
 - Engagement/Fun

LEVELS OF INQUIRY



Herron, M.D. (1971). "The nature of scientific enquiry." *School Review*, 79(2), 171- 212.

CURRICULUM IDEAS

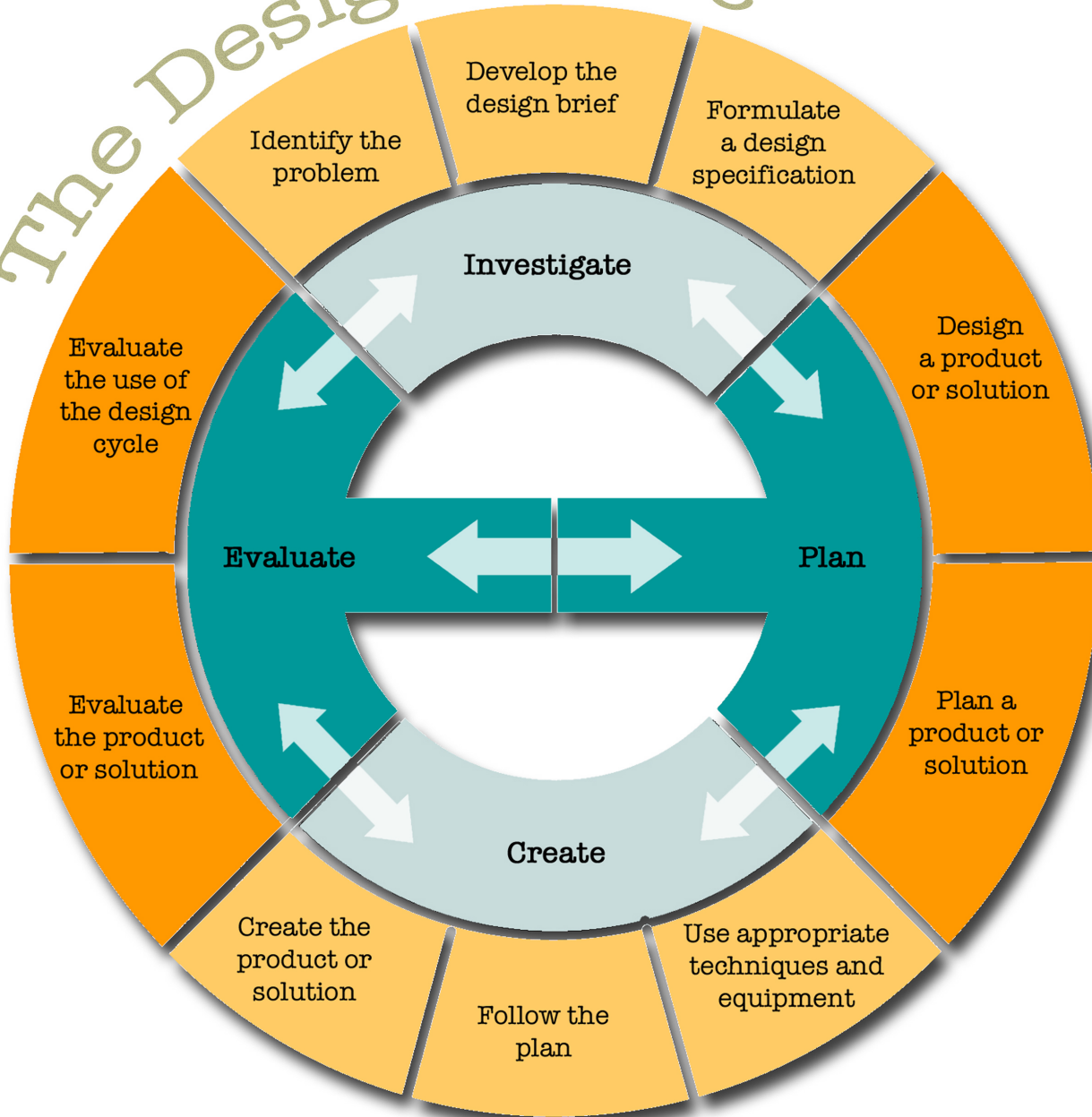


GRASPS ASSESSMENT DESIGN

UNDERSTANDING BY DESIGN BY GRANT WIGGINS AND JAY MCTIGHE

- **GOAL**: Establish the goal, problem, challenge, or obstacle in the task.
- **ROLE**: Define the role of the students in the task.
- **AUDIENCE**: Identify the target audience within the context of the scenario.
- **SITUATION**: Set the context of the scenario. Explain the situation.
- **PRODUCT**: Clarify what the students will create and why they will create it.
- **STANDARDS and CRITERIA [INDICATORS]**: Provide students with a clear picture of success. Identify specific standards for success. Issue rubrics to the students or develop them with the students

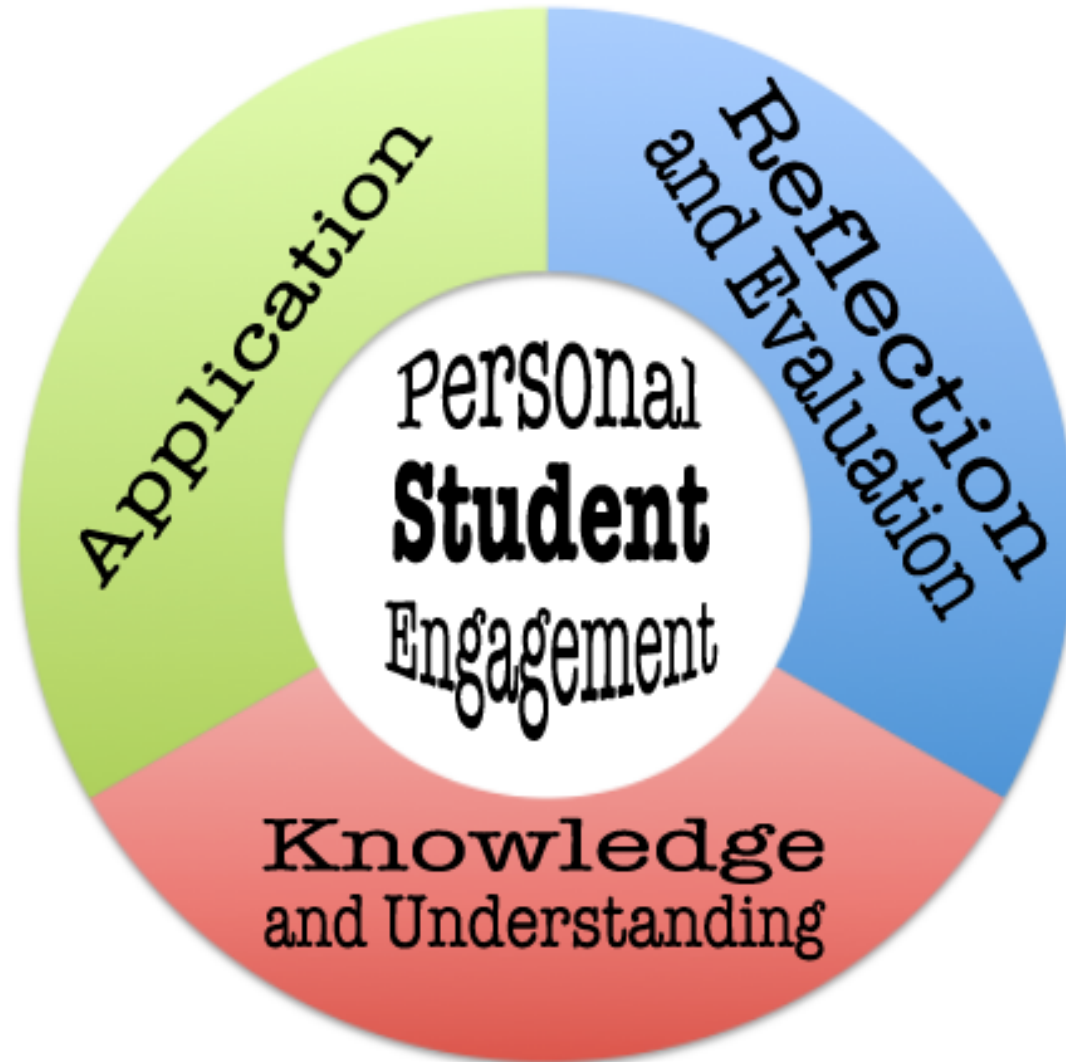
The Design Cycle



INTERDISCIPLINARY UNIT DESIGN

- Science and Design:
 - Your challenge is to design a garden to grow food using sustainable processes, following the design principles. The design must meet a food need for our local community. The design needs to be made of affordable/recycled/repurposed materials and support plants and animal life (insects, fish). In addition, the design must use renewable energy (wind, solar).

IB/MYP Arts Objectives



INTERDISCIPLINARY UNIT DESIGN

- Art and Humanities:
 - Your task is to create an add campaign to communicate the need for a garden to cafeteria food program in our community. You must convince the school board to allow for our school garden vegetables to be served. You must interpret the different perspectives and their implications through your public service announcement. You must produce a 3-minute video; which includes student performances, demonstrates editing skills, and graphics to enhance your message.

PARTNERSHIPS

Navy Fleet Center



Good Neighbor Gardens



GOOD NEIGHBOR GARDENS

- What is a CSA?
 - Community Supported Agriculture
 - Business plan
 - Maintains garden in your front yard
 - Harvested weekly to share in CSA basket
- Why start a foundation?
 - Way to receive donations earmarked for garden
 - Funds needed to pay for ongoing maintenance/garden consultant



<http://www.goodneighborgardens.com/blog/>

GREENHOUSE



VOLUNTEER EVENTS

Garden Planting Party



Keller Williams Red Day



MARKETING AND SUSTAINABILITY

Future Events

- Fall Harvest Festival
- Weekend community gardening workshops
- Evening food tasting events hosted by professional chefs and high school culinary students
- Open houses

Marketing Materials

- Website
- Brochure
- Press Releases



RAISED BEDS AND HYDROPONICS



GARDEN ROOTS CLUB



WHAT'S NEXT

- Aligning lessons with common core standards
- Developing/refining interdisciplinary units
- Exploring grant opportunities and seeking new partnerships
- Sharing this work with others